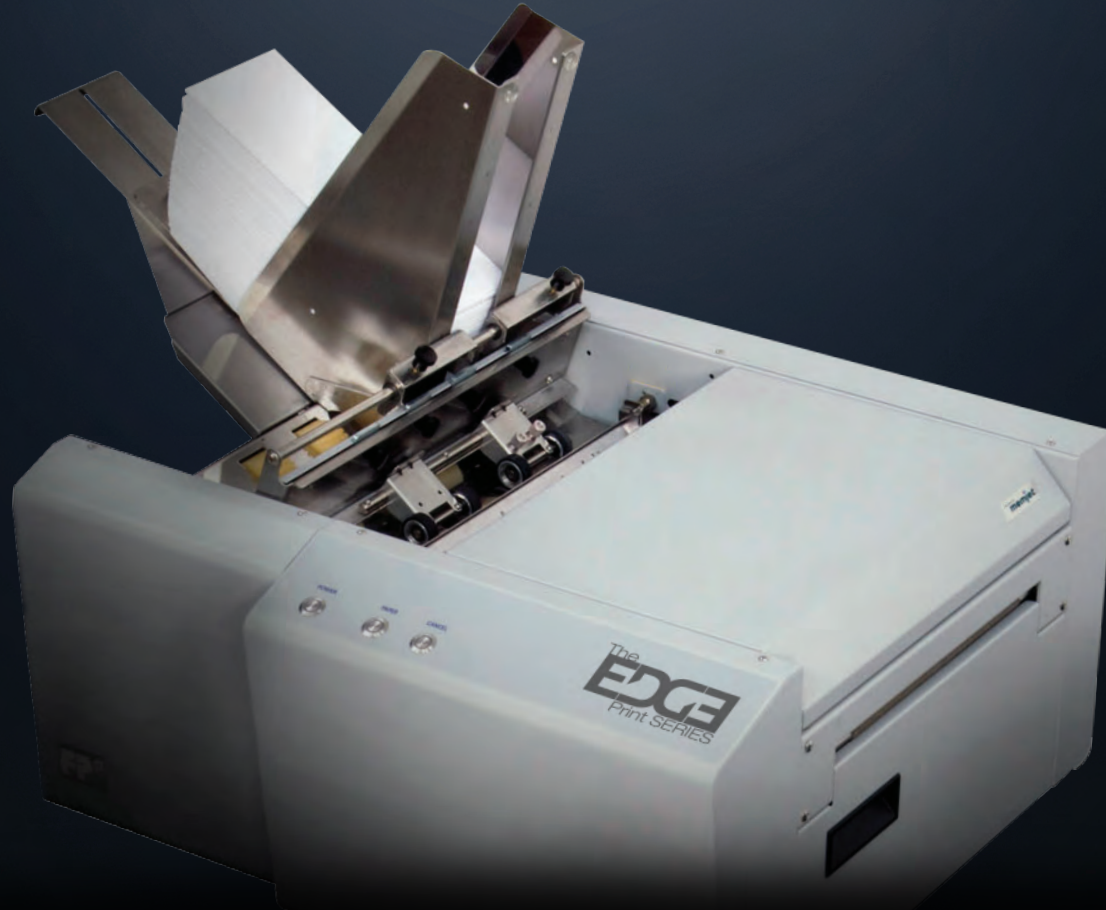




Real. Simple. Mailing.



See the **EDGE** print series in your office.

Use the camera on your mobile device to scan this QR Code



# The **EDGE** Print SERIES



LOW COST  
PER PRINT



COOL PRINT  
TECHNOLOGY



OFF THE EDGE  
PRINTING



MEMJET® TECHNOLOGY



MULTI-MEDIA

## TAKE YOUR PRINTING OFF THE EDGE

The FP EDGE Print Series is an entirely new way to print. These powerhouse printing solutions cover all of your printing needs from direct mailers and inserts to envelopes and labels. The EDGE Print Series embodies a full range of features that enhance your digital print capabilities. Whether you're a corporate mailroom, a dedicated print shop, marketer or mail house, you'll find FP's EDGE Print Series to be a compelling solution for your color and address printing needs.



With the FP EDGE, effortlessly  
print marketing messages and  
vibrant designs that grab the  
attention of your recipients at a  
very low cost per print.



# EDGE<sup>2</sup>

The Double EDGE takes your print efficiency to the next level with its duplex print capability. Easily print on both sides of your mail piece with one click of a button.

## ENHANCE YOUR MAILINGS

### FlexMail™



FlexMail™ software makes it easy to connect to, clean and organize address data from any source and print graphically rich personalized envelopes.

Design your mail pieces and print at high quality speed on any EDGE Series Printer.

## INTRODUCING

### EDGE<sup>XS</sup>



The EDGE<sup>XS</sup> inkjet label printer is perfect for any business looking to print low cost, off the edge color labels and banners.

## Specifications

### EDGE

Speed	8,000 envelopes per hour 3,600 letter sized sheets per hour
Print Resolution	1600 x 1600 (best) 1600x800 (normal)
Material Size (Hopper)	3"x 4.2" (min) 9.5" x 17" (max) manually load banners up to 30"
Material Thickness	up to 0.020"
Image/Print Area	up to 8.5" x 30" with full bleed capability
Color Matrix	up to 16.8 million colors CMYKK
Duty Cycle	350,000 letter sized sheets per month
Print Engine	Memjet®
Dimensions	24"(L) x 20"(W) x 17.25" (H)
Weight	75 lbs.

### EDGE<sup>2</sup>

Speed	8,000 envelopes per hour 3,600 letter sized sheets per hour
Print Resolution	1600 x 1600 (best) 1600x800 (normal)
Material Size	
Top Unit (Simplex Mode)	3"x 4.2" (min), 9.5" x 17" (max)
Bottom Unit (Duplex Mode)	3"x 4.2" (min), 9" x 17" (max)
Material Thickness	up to 0.020"
Image/Print Area	up to 8.5" x 30" with full bleed capability
Color Matrix	up to 16.8 million colors CMYKK
Duty Cycle	350,000 letter-sized sheets per month
Print Engine	Memjet®
Dimensions	top unit: 48"(L) x 21.5"(W) x 54.5" (H) bottom unit: 39" (L) x 21.5" (W) x 54.5" (H)
Weight	75 lbs.



## Why FP?

Plugged into over 230,000 mailrooms worldwide, FP Mailing Solutions is the fastest growing mailing solutions company in the U.S.

**Real people.** – With over 1,100 employees, FP provides all of our customers with a dedicated customer service team located in the U.S.

**Simple processes.** – FP invests in research and development in order to continue to provide our customers with the simplest of solutions. FP is the leader in mailroom technology, being the first postage meter company to introduce a digital and USPS® IMI Compliant meter.

**Mailing solutions.** – With over 90 years of experience, and operations in over 40 countries, it's easy to see what makes FP Mailing Solutions the industry expert in mailroom solutions and technology.

Learn more at [www.fp-usa.com/EDGE](http://www.fp-usa.com/EDGE)

BR2243

© 2017 FP Mailing Solutions. All Rights Reserved. TM, SM and ® denote trademarks or registered trademarks of Francotyp-Postalia, Inc. The FP logo and FP Mailing Solutions Product logos are trademarks or registered trademarks of Francotyp-Postalia, Inc.