

How to Use a Black Toner Cartridge as a Waste Toner Container in your Kyocera Models

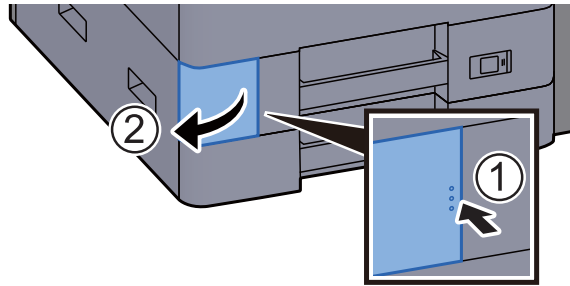
When the waste toner box is full, the following message will be displayed. Immediately replace the waste toner box. "Waste toner box is full." **Please use empty black toner container for replacing full waste toner boxes. This is an excellent recycling benefit of these products.**



CAUTION

Do not attempt to incinerate parts which contain toner. Dangerous sparks may cause burns.

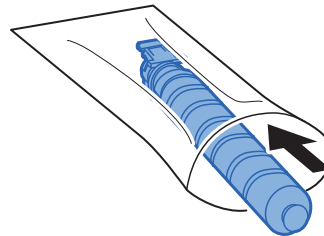
- 1 Open the waste toner box cover.**



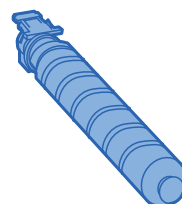
- 2 Remove the Waste Toner Box.**



- 3 Put used Waste Toner Box into the plastic waste bag.**

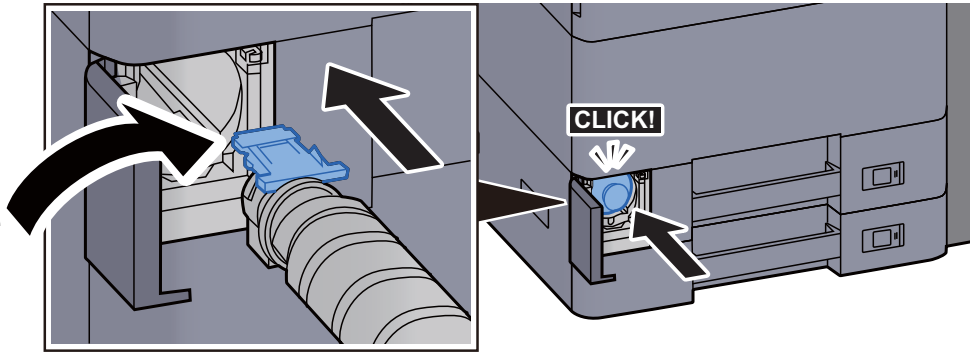


- 4 Use empty toner bottle to replace waste toner box.**



5 Install the Waste Toner Box.

This sensor should be face down.
(Only shown face up so you can see sensor)



6 Close the waste toner box cover.

