

# Kyocera MZ4000i Series: Advanced features, great value.

Transform your workplace with efficient and affordable technology.



**TASKalfa MZ3200i**



**TASKalfa MZ4000i**

# Set yourself up for success

Today's evolving workplace pressures businesses to continually adapt so they can remain relevant and competitive. With so many new approaches and technologies, it's hard to keep up — in particular, for organizations on tight budgets. But what if you had one technology that helped you to always stay current, up-to-date, and ready for anything that comes your way?

We present the new **MZ4000i Series**: affordable technology that actively addresses the needs of today's ever-changing work environments. It's a simple, secure and efficient solution that provides a scalable platform that grows with your business and integrates into every workspace.

Take a closer look at its powerful features!

		
	TASKalfa MZ3200i	TASKalfa MZ4000i
 Print Speeds	32 ppm	40 ppm
 Scan Speeds	up to 200 ipm	up to 200 ipm
 Document Processor	up to 320-sheets	up to 320-sheets
 Resolution	up to 1200 dpi	up to 1200 dpi
 Security Features	Robust new security enhancements and support for the latest certifications including FIPS 140-2 and HCD-PP	

# Keeping smaller businesses in mind

The reliable MZ4000i Series is built on proven technology that has stood the test of time, setting the standard even higher for the black & white MFP's market. Kyocera has carefully designed its new devices to accommodate the demands of smaller enterprises, which need scalable and productive technology that doesn't break their bank.

With an array of scanning, input, and professional finishing options, the Kyocera MZ4000i BW Series will effortlessly help your business meet its goals, stay competitive and propel itself forward.

## Technology that...



### Grows with you.

Your business is never stagnant, and your technology shouldn't be either. Whether it's at the office or in the cloud, the MZ4000i Series improves the way you work by providing flexible enablers that grow with you. As your customer's needs increase, you can easily download new applications to further automate workflows and business processes.

Kyocera always takes into account your future growth — our devices are durable, reliable and are packed with upgradable features. This means that you don't have to spend more money on new MFPs in the future. You've just found yourself a long-term business partner.

### Keeps you up and running.

Have you been looking for ways to increase productivity levels in your organization? You've come to the right place: the Kyocera MZ4000i Series. Our solution is to provide a more simple, intuitive and efficient feature-rich customer experience. The devices are equipped with time-saving features that help you get the job done right the first time, minimizing downtime and maximizing productivity.

And, of course, the print and scanning speed is unmatched. The business landscape is becoming increasingly demanding and to keep up, you need powerful devices from a trusted provider like Kyocera.



# Your upgraded productivity package deal

Who knew it was possible to get more for less? Empowering your workforce to boost workflow efficiency, the versatile Kyocera MZ4000i Series is packed with an enhanced feature set to keep your business going, regardless of the location. Both in place and remote tools can help proactively minimize device downtime as well as maximize device availability.

And the best part? You receive all these enhanced features for an affordable price.

## Lightning-fast document scanning speeds

Our devices don't disappoint. With speeds of up to 200 ipm in both b&w and color, and features such as optional staple detection to eliminate potential misfeeds, Kyocera offers the most productive capabilities available.

## Standard mobile print

Print what you want, when you want. Our devices support AirPrint, Mopria Print Service, KYOCERA Mobile Print and KYOCERA MyPanel support, so that you can easily transform your print and scan workflow into a mobile experience.

## Software ready

HyPAS-enabled devices run Kyocera Business Applications and 3rd-party applications that meet your workflow and enhance information sharing needs.

## Flexible media handling

A standard capacity of 1,100-sheets is ideal for small working environments, but as your business expands, you can upgrade to 4,100-sheets to keep productivity levels to a maximum. It supports up to 11" x 17" sized media and up to 140 lb. Index weighted media (via the MPT).

## Advanced finishing options

The devices have a range of stapling and hole punching features including: a DF-7120 1,000 (50-sheet staple) and a DF-791 3,000 sheet (65-sheet staple) finisher options that also support optional 2/3 hole punching. An additional 7 bin Mailbox option can be added to the DF-791 Finisher that has a capacity of 100-sheets/tray stapled and hole punching options.

## Kyocera Fleet Services ready

KYOCERA Fleet Services, a secure cloud-based monitoring system, helps your business optimize device uptime and reduce costs. It's the ultimate tool to boost your business.

## Standard 2.4 GHz Wi-Fi support

The new 2.4GHz/5GHz multi-band Wi-Fi option can now better support customers with the need for speed, providing them with faster networking options. Poor connection will never slow down your workflow again.

## Migrate your work to the cloud!

When you combine the new MZ4000i with Kyocera's new cloud-based solutions, customers can move printing and scanning to a secure, high-performance cloud service with ease—all while saving money on print costs!

# Need for speed

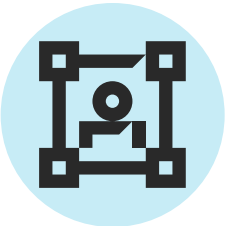


The new **MZ4000i Series** is always up for a challenge, even in the most demanding work environments. The devices are integrated with one of the fastest document processors in the industry – the DP-7170 Dual Scan Document Processor. It's perfectly fit to print at speeds of up to 200 ipm with the ability to hold up to 320 originals at a time. You won't find better scanning capabilities on the market – it's rapid, productive and reliable.

Our new enhanced scanning features now include:



**Brand-new staple detection feature**  
Maximizes productivity and minimizes downtime caused by misfeeds.



**Multiple cropping capability and new ID card function**  
Scan ID cards easily and save time by reducing the number of scans needed.



**New functions**  
Handwriting Enhancement and 'Super Resolution' features help you communicate your message more effectively.



# Keep your data safe and sound

Our solutions don't only improve the way you work, but also protect how you work. With the latest security features and advancements on today's market, the new MZ4000i Series continues to reflect Kyocera's dedication and commitment to protecting your data, your device and your network.

## Never let your guard down with Kyocera.



**TPM – Trusted Platform Module**  
A security chip set that applies a Cipher Key on the Kyocera Data Security Kit for an additional layer of protection for HyPAS applications, address book, logs, image data, document box and user lists.



**Secure Boot/Runtime Integrity Check**  
Carries out comprehensive checks to ensure the Firmware, Bios, LINUX and Java platforms are at a 100% integrity level, ensuring that your device is always ready.



**Allow Listing**  
Our anti-malware measure actively manages the list of programs that can run on the MFP and prevents programs that are not on the list from running.



**Leading End-of-Life Sanitization**  
Utilizes 5 safeguard steps to ensure that all the device information is completely erased and that the MFP will be automatically disabled prior to removal.



**SIEM/Syslog**  
Collects log and event data to provide real-time analysis of security alerts generated by applications and network hardware for better tracking.



**TLS v1.3**  
The most recent version of the TLS Protocol that optimizes performance, hardens the security of your encrypted connections and provides secure communication.



**Security standards and certifications**  
The device comes with the FIPS 140-2 certification, meeting government and private sector security standards for both communication and storage.



**Hard Copy Device Protection Profile (HCD-PP)**  
The latest stringent protection profiles have encryption and authentication protocols to safeguard information processed by the MFP, adhering to the latest government security requirements.



**PDF Digital Signatures**  
Digital signatures can be added to scanned PDF documents; consequently, recipients of electronic documents can verify that their PDFs have not been forged or altered.

# Can high-quality devices be sustainable? With Kyocera, they can.

The combination of excellent quality and sustainability is a running theme in all of Kyocera's devices — the case is no different for the new MZ4000i Series.

Our devices provide transformational technology that deliver vibrant, high-impact black and white graphics and crisp text in an environmentally friendly way.



New and more eco-friendly toner design



High-quality prints (1200 dpi resolution)



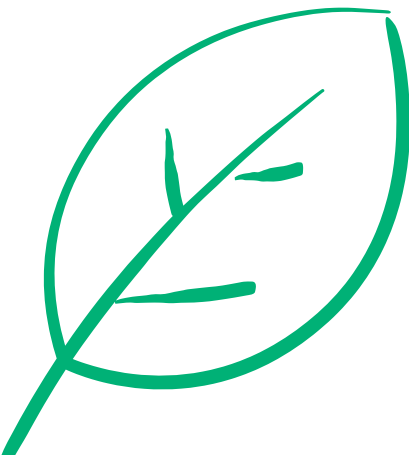
Durable and long-life components



Toner-only innovation

With influential features and unmatched reliability, these eco-friendly multifunctional systems are expertly engineered to help you change direction and blaze new trails!

Doing what is right as a human being means taking care of our environment for generations to come.



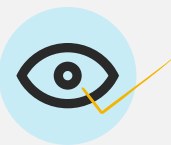
# Simple design = happier customers



Kyocera believes that great technology is intuitive technology. Your business cannot be productive if your employees are struggling to use new work devices. The Kyocera MZ4000i Series follows the same consistent user engagement approach as the rest of its A3 products with extra enhancements added.

At 10.1", our new streamlined user interface is now larger than prior models and displays information clearly in standardized colors. We've gone the extra mile to minimize frustration and maximize your work power, giving your business more time to focus on value-adding activities instead of figuring out how to use your office devices. With Kyocera, you'll be able to navigate the interface with your eyes closed!

We dramatically improved the user experience by making our technology:



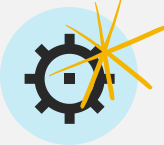
### Simple

All icons and graphics are simplified and use standard colors to make it easier to navigate the interface.



### Intuitive

Use expressions to emphasize information and gestures to select target items.



### Efficient

With less steps and faster settings, you will work quicker and more productively.

# Do more. Spend less.

The Kyocera MZ4000i Series offers:

## Boosted productivity

Rapid scan and print speeds with a multitude of useful tools to get your work done efficiently.

## Powerful security features

Integrated with the most advanced features on the market, your data is always safe and secure!

## Simple scalability

As your business needs grow, so do the capabilities of your technology - workflows are easy to upgrade.

## User-friendly interface

An easy, simple and logical design means that your users won't need much training to get up and go.

## Cost-effective

Engineered with durable components, helps minimize the amount of money spent on repairs or replacements.

# Choose Kyocera, choose the path for success!





Kyocera Document Solutions has championed innovative technology since 1934. We enable our customers to turn information into knowledge, excel at learning and surpass others. With professional expertise and a culture of empathetic partnership, we help organizations put knowledge to work to drive change.

KYOCERA Document Solutions America  
225 Sand Road, PO Box 40008  
Fairfield, New Jersey 07004-0008, USA  
Tel: 973-808-8444



**DS** Business Life  
Simplified  
COPIER TEAM

**New Jersey Office (HQ)**

151 Sumner Avenue  
Kenilworth, NJ 07033  
908.653.0600

**New York Office**

505 8th Avenue  
New York, NY 10018  
212.468.5200

**[www.dsbls.com](http://www.dsbls.com)**

**[kyoceradocumentsolutions.us](http://kyoceradocumentsolutions.us)**