

TASKalfa MZ3200i: A revolutionary versatile printer

The Kyocera TASKalfa MZ3200i is a complete A3 MFP that blends outstanding security with unbeatable quality to match the needs of the modern workplace both today and tomorrow.



TASKalfa MZ3200i



Up to 32 pages per minute

Standard 1,100-sheet capacity

Intuitive display

Enhanced security

Proven reliability



TASKalfa MZ3200i

BASIC SPECIFICATIONS

Configuration: BW MFP - Print/Scan/Copy/Optional Fax
Speed (print only):
Letter: 32 ppm, Legal: 17 ppm, Ledger: 17 ppm
Warm Up Time: 18 seconds or less (power on)
First Page Out: Copy: 4.3 seconds / Print: 4.9 seconds
Display: 10.1" Color Touch Screen Control Panel
Memory/Hard Disk Drive: Std. 4GB RAM/32GB SSD/
320GB HDD, 1TB HDD (option)
Duplex: standard stackless duplex supports 5.5" x 8.5" to
11" x 17", 16 lb. Bond - 90 lb. Index (60 - 163gsm)
Standard Output Tray: 5.5" x 8.5" - 11" x 17"/250-sheets
Electrical Requirements:
120V/60Hz/9.9A; 220-240V, 50/60Hz, 6.3A
Typical Electricity Consumption (TEC):
120V: .37 kWh/week; 220V: .40 kWh/week
Dimensions: 23.3" W x 27.4" D x 26.8" H
Weight: 178.5 lbs
Maximum Monthly Duty Cycle: 150,000 pages per month

PAPER SUPPLY

Paper Capacity: Standard 1,100-sheets;
Maximum 4,100-sheets
Standard Paper Sources: Dual 500-sheet trays,
100-sheet MPT, Auto Selection/Switching
Standard Paper Size:
Tray 1 - 5.5" x 8.5" - 11" x 17"
Tray 2 - 5.5" x 8.5" - 11" x 17"
MPT: 5.5" x 8.5" - 11" x 17"

OPTIONAL PAPER SOURCES

PF-791 Dual 500-sheet tray option - 5.5" x 8.5" - 11" x 17"
PF-810 Dual 1,500-sheet tray option - 8.5" x 11"

PAPER WEIGHT

Trays: 16 lb. Bond - 90 lb. Index (60 - 163gsm)
MPT: 12 lb. Bond - 140 lb. Index (45 - 256gsm)
Input Materials: Standard/Optional Trays: Plain, Bond,
Recycled, Transparency (OHP), Cardstock, Envelopes

SECURITY SPECIFICATIONS

Local Authentication, Network Authentication,
Encryption Communication (IPsec, HTTPS, TLS 1.3, LDAPS,
SMTP/POP/FTPS over TLS, SNMPv3),
TPM chipset (Trusted Platform Module), S/MIME,
SCEP (auto certificate issuance/renewal),
OCSP/CRL (certificate validation),
Secure Boot (firmware authenticity verification),
Run Time Integrity Check, HDD and Memory Overwrite (7x) Mode
and HDD Data Encryption (256 bit),
Common Criteria (ISO/IEC-15408/EAL2), IEEE 2600.2,
FIPS 140-2 for storage, HCD-PP and FIPS 140-2 for communication
require Data Security Kit 10 option which provides enhanced IPsec
encrypted communication

PRINT SPECIFICATION

Standard Controller: ARM Cortex-A53/1.6GHz
PDLs/Emulations: PRESCRIBE, PCL6, KPDL3 (PS3),
XPS, OPEN XPS, PDF; Optional (UG 34): IBM ProPrinter,
Line Printer, LQ-850
Print Resolution: Up to 1200 x 1200 dpi
Fonts: KPDL3, PCL6, Bitmap
OS Compatibility: Windows: 10/11/Server 2012/Server 2012
R2/Server 2016/Server 2019; Mac OS X v10.0 or later; Chrome OS
Mobile Printing: Apple AirPrint®, Mopria Print Service®,
KYOCERA Mobile Print, KYOCERA MyPanel remote access
Interfaces: Standard: 1000 Base-T/100-Base-Tx/10BASE-T
(IPv6, IPv4, IPsec), 802.3az ready, High-Speed USB 3.0,
4 USB 2.0 Host Interfaces, 2 eKUIO Expansion Slots,
IEEE 802.11b/g/n Wireless LAN (supports up to 98.5 feet)
Optional: IEEE 802.11a/b/g/n/ac (IB-37 for 2.4/5GHz),
10/100/1000BaseTX (IB-50 for Dual NIC); IEEE 802.11b/g/n
(IB-51 for Wireless LAN Interface (supports up to 328.1 feet))
Network Print and Supported Protocols: HTTPS, FTPS,
SNMP v1/v2c/v3, Raw Port (Port 9100) TCP/IP, IPv4, IPv6,
DHCP LPR, DNS, WSD Scan/Print
Drivers: KX Driver, PCL Uni-Driver, KPDL Uni-Driver,
Microsoft Universal Print Driver, Network Fax Driver,
TWAIN Driver, WIA Driver, Status Monitor,
Common Profile, Output to PDF, Security Watermark,
KYOCERA Print Center, MAC Driver, Chrome Print Driver,
Linux Driver, KX PRESCRIBE Macro Generator,
Windows Inbox Driver, Linux SANE Driver

Utilities: KYOCERA Net Viewer, KYOCERA Device Manager, Quick
Setup, ID Register, Software Management Service,
Upgrade Studio, Web Package Maker, Removal Tool,
Wi-Fi Setup Tool, PDF Direct Print, Command Center RX;
Kyocera Net Manager (option)

SCAN SPECIFICATIONS

Scan Type: Color and Black & White Scanner
Scan Resolution: 600/400/300/200 dpi, 200 x 100 dpi,
200 x 400 dpi
File Formats: TIFF, JPEG, XPS, OpenXPS, PDF/A-2.0
(MMR/JPG Compression/High Compression PDF);
Option: Scan Extension Kit Text Searchable PDF;
MS Office File Types
Connectivity: 10 BASE-T/100 BASE-TX/1000 BASE-T
(IPv4, IPv6, IPsec) TCP/IP, Hi-Speed USB supported protocols
Scanning Functions: Scan-to-Folder (SMBv3), Scan-to-Email,
Scan-to-FTPS over TLS, Scan-to-USB, PDF Digital Signatures,
WSD Scan, Linux SANE Scan, TWAIN Scan, Specified Color Removal,
Border Erase, Preview
Original Size: Up to 11" x 17" (Glass)
Drivers: TWAIN/WIA/Linux SANE Driver/WSD Scan

OPTIONAL DOCUMENT PROCESSORS¹

Acceptable Originals: 5.5" x 8.5" - 11" x 17"

DP-7140: Reverse Auto Document Processor/50-sheets
Speed: Simplex: 50 ipm; Duplex: 16 ipm (BW/Color)
Weight: Simplex: 13 lb. Bond - 90 lb. Index (35 - 160gsm)
Duplex: 16 lb. - 32 lb. Bond (50 - 120gsm)

DP-7150: Reverse Auto Document Processor/140-sheets
Speed: Simplex: 80 ipm; Duplex: 48 ipm (BW/Color)
Weight: Simplex: 13 lb. Bond - 90 lb. Index (35 - 160gsm)
Duplex: 16 lb. - 32 lb. Bond (50 - 120gsm)

DP-7160: Dual Scan Document Processor/320-sheets
Speed: Simplex: 100 ipm; Duplex: 200 ipm (BW/Color)
Weights: Simplex: 13 lb. Bond - 90 lb. Index (35 - 220gsm)
Duplex: 16 lb. - 120 lb. Index (50 - 220gsm)

DP-7170 (with multi-feed and staple detection):
Dual Scan Document Processor/320-sheets
Speed: Simplex: 100 ipm; Duplex: 200 ipm (BW/Color)
Weights: Simplex: 13 lb. Bond - 120 lb. Index (35 - 220gsm)
Duplex: 16 lb. - 120 lb. Index (50 - 220gsm)

COPY SPECIFICATIONS

Copy Resolution: 600 x 600 dpi
Image Mode: Text, Photo, Text/Photo, Graphic/Map
Continuous Copy: 1 - 9,999
Additional Features: Auto Magnification, Auto Paper Select,
Combine Copy, Mirror Image, Rotate Copy, Border Erase,
Margin, Page Number, Form Overlay, Blank Page Skip,
Specified Color Removal, Proof Copy, Preview, ID Card Copy
Job Management: 1,000 User Codes, Job Build, Shortcut Keys,
Repeat Copy
Magnification/Zoom: Full Size, 4 Reduction,
4 Enlargement Preset Ratios, 25 - 400% in 1% Step Increments
Document Box: Custom/Job

OPTIONAL FAX SPECIFICATIONS

Fax Type: Fax System 12 (option)
Type/Data Compression: G3 Fax/MMR, MR, MH, IBIG
Transmission Speed/Modem Speed:
Less than 3 seconds/33.6 Kbps
Fax Memory: Standard 170 MB
Driver: Network Fax Driver
Fax Functions: Network Fax, Duplex Transmission and Reception,
Encrypted Transmission and Reception, Polling Transmission and
Reception, Broadcast, Fax Server Integration,
Fax Dedicated Paper Feed Tray, Fax Forwarding to email or file

OUTPUT & FINISHING OPTIONS²

OPTIONAL 1,000 SHEET FINISHER DF-7120³

Stack/Staple Capacity: Main Tray: 1,000-sheets/50-sheets,
(up to 24 lb. Bond [90gsm])
Paper Size: 5.5" x 8.5" - 11" x 17"
Paper Weight: 14 lb. Bond - 140 lb. Index (52 - 256gsm)
Edge Staple Position: Top Left, Bottom Left, Center Bind
Optional Punch PH-7A: 2/3 Hole Punch Unit,
supports 8.5" x 11" - 11" x 17"; 14 lb. Bond - 140 lb. Index
Dimensions: 21.6" W x 24.4" D x 41.3" H

OPTIONAL 3,000 SHEET FINISHER DF-791³

Stack/Staple Capacity: Main Tray (A): 3,000-sheets;
Sub Tray (B): 200-sheets; Sub Tray (C):50-sheets/65-sheets
Paper Size: 5.5" x 8.5" - 11" x 17"
Paper Weight: 16 lb. Bond - 140 lb. Index (60 - 256gsm)
Edge Staple Position: Top Left, Bottom Left, Center Bind
Dimensions: 29" W x 26" D x 42" H
Optional Punch PH-7A: 2/3 Hole Punch Unit,
supports 8.5" x 11" - 11" x 17"; 14 lb. Bond - 140 lb. Index
Optional Multi-Bin Mailbox MT-730(B): (DF-791)
7 Trays; supports: 16 lb. Bond - 90 lb. Index (60 - 163gsm);
Stack Capacity per bin: 100-sheets: 5.5" x 8.5", 8.5" x 11";
50-sheets: 8.5" x 14", 11" x 17"

ADDITIONAL OPTIONS

AK-740 Bridge Unit Attachment Kit,
HD-16 Large Capacity HDD (1TB), Internet Fax Kit (A),
Card Authentication Kit (B), Data Security Kit 10,
2.4GHz/5GHz Multi-band Wi-Fi option (IB-37), Dual NIC (IB-50),
Extended Range Wireless LAN NIC (IB-51),
Thin Print option (UG-33), Printer Emulation option (UG-34),
DT-730(B) Document Tray, Scan Extension Kit (A) for Text Searchable
PDF; Keyboard Holder 10, Numeric Keypad (NK-7130), Cabinet Stand

¹ Only 1 Document Processor can be installed

² Only 1 Output Option can be installed

³ Requires Bridge Unit Attachment Kit (AK-740)

SOLUTIONS AND SERVICES

Remote Management: Kyocera Fleet Services ready! A highly
secure cloud-based monitoring solution that offers real-time
visibility into your fleet. Optimize device uptime and be notified
when to replenish supplies. Streamline billing with seamless 3rd
party application integration, allowing you to focus solely on
your business.

Printing Software: Cost Control & Security, Cloud & Mobile,
Printer Management

Content Services: Scanning Applications and Connectors,
Intelligent Process Automation, Enterprise Content Management

IT Solutions: Technology Solutions (incl. Data Centers and Cloud),
Network Infrastructure, Cybersecurity Solutions,
Collaboration Solutions

Consulting Services: IT Health Check, CIO as a Service,
Healthcare Compliance, Backup and Recovery Planning

Professional Services: Design and Architecture, Project
Implementation, Project Management

Managed Services: Help Desk Services,
Retainer Services and Onsite Support

TASKalfa MZ3200i

Document Processing Options



DP-7170
Dual Scan Document Processor
320-sheet capacity
w/ multi-feed & staple detect
100 ipm simplex / 200 ipm duplex



DP-7160
Dual Scan Document Processor
320-sheet capacity
100 ipm simplex / 200 ipm duplex



DF-7150
Reversing Auto Document Processor
140-sheet capacity
80 ipm simplex / 48 ipm duplex



DP-7140
Reversing Auto Document Processor
50-sheet capacity
50 ipm simplex / 16 ipm duplex

Document Finishing Options



PH-7A
2/3 Hole Punch Unit for
the DF-7120 Finisher
Resides in the Finisher



AK-740
Attachment Kit required
for both the DF-7120
and DF-791 Finishers



TASKalfa MZ3200i



DT-730 (B)
Original Holder
Optional platform that holds
originals prior to copying



NK-7130
Numeric Keypad
Provides additional hard
key option for the User Interface

DF-7120
1,000-sheet Finisher
Staples up to 50-sheets



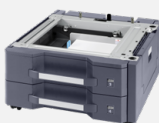
MT-730 (B)
7-Bin Mailbox Option
Installed on top of the
DF-791 Finisher
Holds 100-sheets/Bin



DF-791
3,000-sheet Finisher
Staples up to 65-sheets

PH-7A
2/3 Hole Punch Unit
for the DF-791 Finisher
Resides in the Finisher

Additional Paper Feeding Options



PF-791
Dual 500-sheet
Paper Tray Option
5.5" x 8.5" to 11" x 17"



PF-810
Dual 1,500-sheet
Paper Tray Option
8.5" x 11"

IB-37
Wi-Fi 2.4 GHz/5GHz

HD-16
1 TB HDD option

Data Security Kit 10

FAX System 12

Internet FAX Kit (A)

**Card Authentication
Kit (B)**

**IB-50 Gigabit Ethernet
Board for Dual NIC**

IB-51 Wireless LAN NIC
(extended range)

PLATEN TYPE E

UG-33 Thin Print

**UG-34 Optional Printer
Emulation**

Scan Extension Kit (A)

Keyboard Holder 10

**DT-730 (B) Original Hard
Copy Holder**



Specifications and design are subject to change without notice. TASKalfa, PRESCRIBE, Kyocera Net Manager, Kyocera Net Viewer, Kyocera Device Manager, PDF Direct Print, Command Center RX, and KX Driver are trademarks of The Kyocera Companies. Mac OS and AirPrint are trademarks of Apple, Inc. Mopria is a trademark of Mopria Alliance, Inc. Windows is a trademark of Microsoft, Inc. All other trademarks are the property of their respective owners.



DS Business Life Simplified COPIER TEAM

New Jersey Office (HQ)

151 Sumner Avenue
Kenilworth, NJ 07033
908.653.0600

New York Office

505 8th Avenue
New York, NY 10018
212.468.5200

www.dsbls.com

Kyocera Document Solutions Partner

KYOCERA Document Solutions America
225 Sand Road, PO Box 40008
Fairfield, New Jersey 07004-0008, USA
Tel: 973-808-8444



kyoceradocumentsolutions.us

Kyocera Document Solutions does not warrant that any specifications mentioned will be error-free. Specifications are subject to change without notice. Information is correct at time of going to press. All other brand and product names may be registered trademarks or trademarks of their respective holders and are hereby acknowledged.
©2022 KYOCERA Document Solutions America, Inc.