

# blüV™ | Service manual

## **Model No:**

**BV-R/RC**

**BV-M/MC**

**BV-R/RC (Purlogix)**

**BV-M/MC (Purlogix)**



1. SAFETY PRECAUTIONS
2. SYSTEM OVERVIEW
3. INSTALLATION
4. WATER FLOW DIAGRAM
5. ELECTRICAL DIAGRAM
6. EXPLODED VIEW
7. FUNCTION
8. ULTRA VIOLET LIGHT
9. FILTERING SYSTEM CHECK SEQUENCE
10. COOLING SYSTEM CHECK SEQUENCE
11. HEATING SYSTEM CHECK SEQUENCE
12. SPECIFICATION



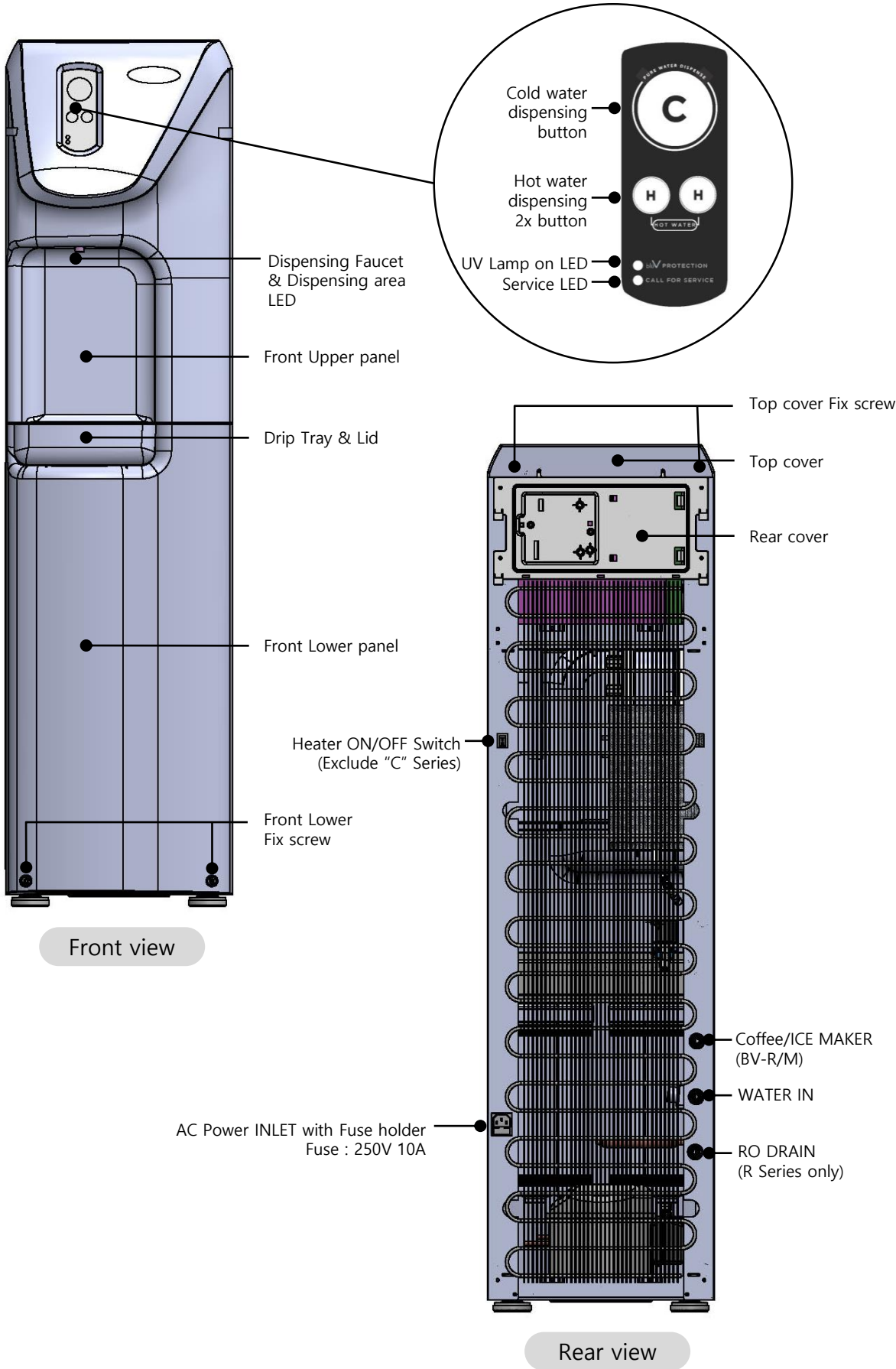
**Warning**  
**To prevent fire or shock hazard, do not expose this unit to rain or moisture.**

**Power System**  
This unit operates on voltage of 120V 60Hz in U.S.A, 230V 50Hz in European countries.

- Caution**  
To prevent electric shock and fire hazards, do not use with other than specified power source
- Changes or modifications not approved by PHSI could void user’s authority to operate this unit, and the product warranty.
- Use appropriate plug adapter for your AC wall outlet.
- If unit begins to leak, shut off water supply, unplug and call service center immediately.
- If moving the unit is necessary, turn off main power and wait for water to cool completely before draining and unplugging.
- Hot water is extremely hot! Avoid dispensing hot water to hands directly.  
Hot water may cause burns.  
Do not allow young children to press the HOT WATER dispensing key.
- If unit will not be used for an extended period of time, drain the system completely before unplugging.
- Do not place any type of water container or heavy item on top of the unit.  
Water may leak into the electrical system causing a fire hazard.  
Heavy items may fall off, causing injury.

MODEL No. TABLE

MODEL'S	BV-R / RC	BV-M / MC	BV-R / RC (Purlogix)	BV-M /MC (Purlogix)
Filter's	PHSI "Sani-Twist™"		Purlogix U	
Sediment	√	√	√	√
Pre carbon	√	√	√	
80GPD RO Membrane	√		√	
Post carbon	√	√	√	
Carbon MF				√



## Water Cooler Installation Instructions

1. Once the unit and filtration system flushing procedures are complete, determine the best installation location. Consider user convenience. Electrical access, Water access, and drain access if applicable. The unit performs optimally if within 20 feet of a cold water supply line (Connect only to a cold water supply) and drain. Do not place unit where it will be exposed to rain, freezing temperatures or direct sunlight.
2. The rear of the unit should be installed at least 2" (5cm) from any vertical surface to ensure proper air circulation.
3. Always check local plumbing codes before tapping into water supply line. Tap into the supply line with a tapping valve faucet fitting ball valve, solder tee or similar device.
4. Use only 1/4" OD copper or plastic tubing to connect your water supply to the cooler water inlet port. This inlet is a quick connect fitting. Units are shipped with plugs in each fitting. Remove the plugs prior to inserting water supply or drain line. A water shut off valve (not included) is recommended between the inlet connection to the cooler and water supply connection.

### 5.R/O coolers only complete instruction

Connect a 1/4" OD tubing to the drain fitting located on the back of the unit. This tube should be routed to the most accessible drain location that allows a tapping into a drain is using a drain saddle clamp (refer to installation instructions included in drain clam assembly). **Always check local plumbing codes before tapping into a drain line.** Most local plumbing codes will require an air gap assembly to be installed between the cooler and the drain connection. Check local plumbing codes to assure compliance. Vertical drain tube routing should be avoided when possible to avoid decreased membrane performance.

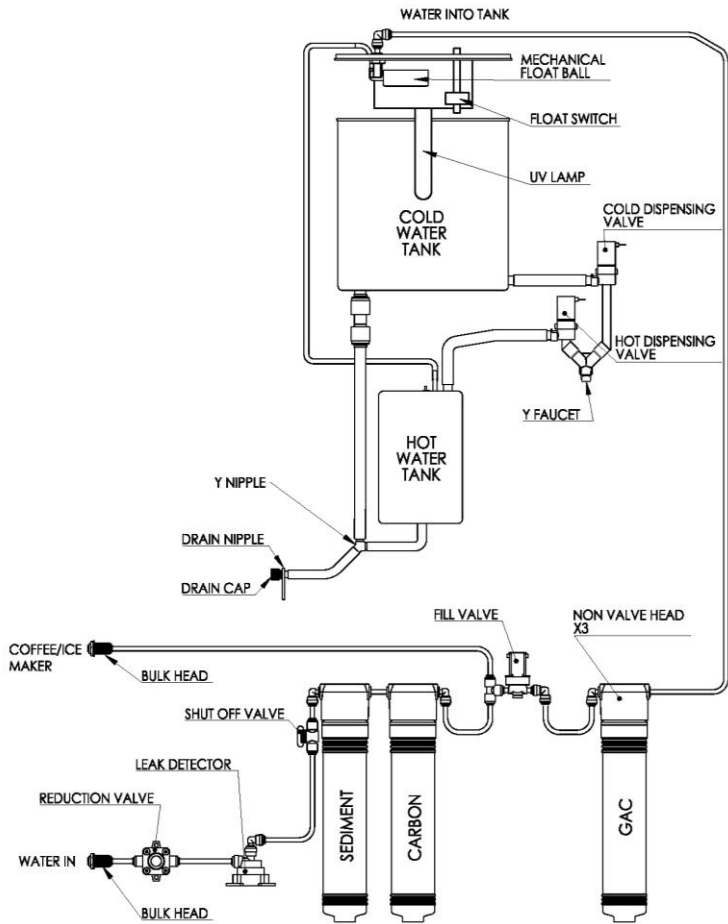
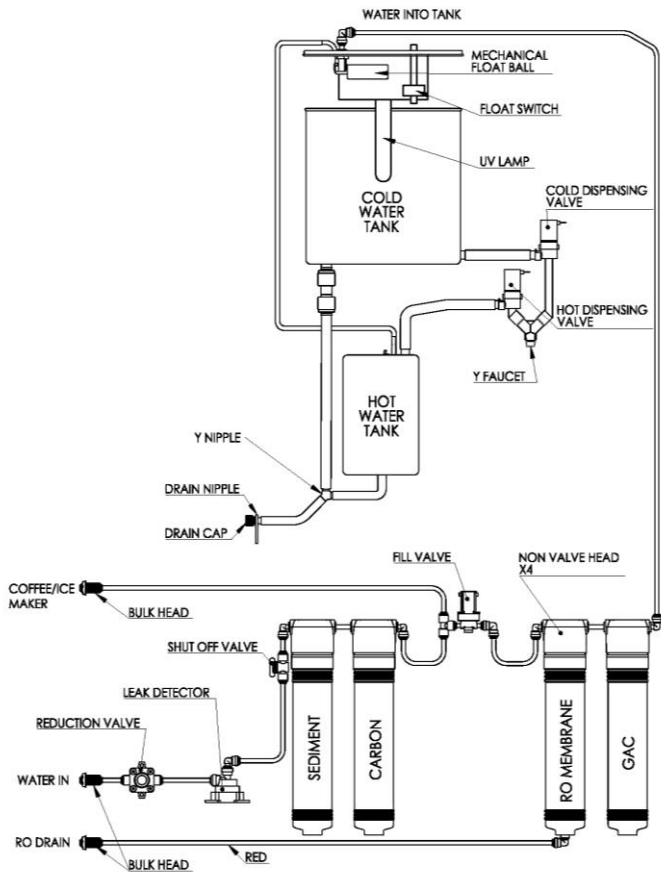
6. Check the available power supply to assure to assure proper electrical service the voltage specification is 115 volt 60 hertz. Voltage outside of this specification will affect the system performance.
7. Verify the hot tank switch is in the "off" position (O). Plug power cord into receptacle.
8. Turn on water supply to cooler then check for leaks.
9. Check for filtered water production.
10. Allow cold/reservoir tank to fill then purge air from hot tank by depressing and holding the hot select button until water pours freely. Turn hot tank switch to "on" position (I).
11. Turn hot tank switch off and shut off water supply. Drain water from tanks. Turn water supply on and refill the unit, repeat. Allow unit to refill completely, purge air from hot tank and turn hot tank on. 60 minutes after unit has been refilled it should reach optimum hot and cold temperature.

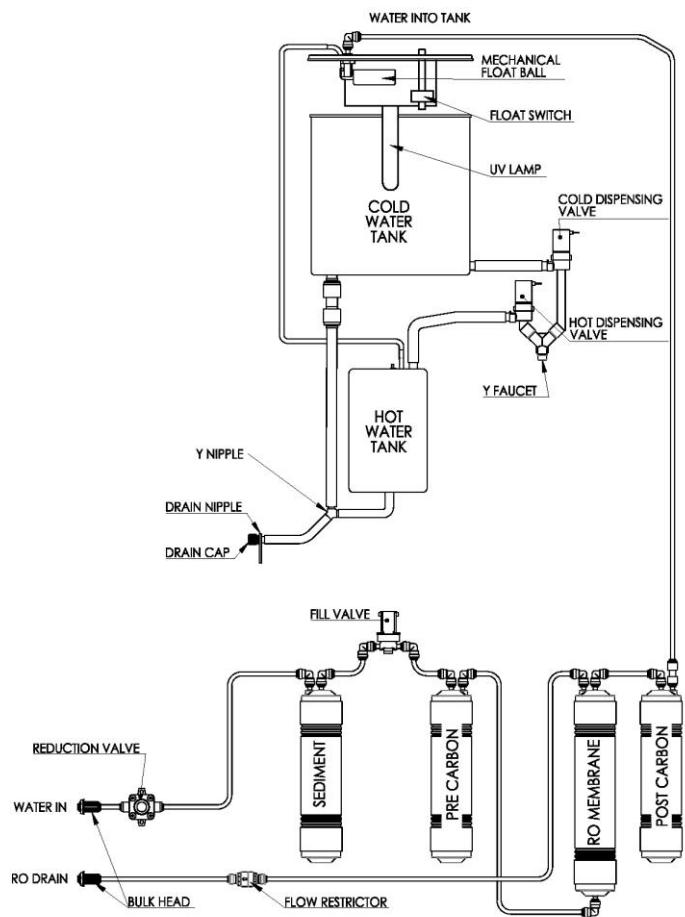
### General Precautions

- **Power interruption.**  
When the power cord is disconnected, wait a minimum of 5 minutes before reconnecting. When power is temporarily turned off, disconnect the cord from the electrical outlet and wait a minimum of 5 minutes before power is reconnected after power is restored.
- **Use water only.**  
Filling the unit with any other type of liquid(s) may cause significant problems, and will void seller's warranty.
- **Stand the unit upright for at least an hour.**  
Do not plug system into electrical outlet until it has been standing upright for at least an hour.
- **Disconnect power if unit requires service.**  
Disconnect the power cord from the outlet before cleaning, inspecting, or repairing the unit to prevent electrical shock.
- **Drain water if unit requires relocation.**  
Always drain the water in the dispenser completely before moving, shipping or storing.

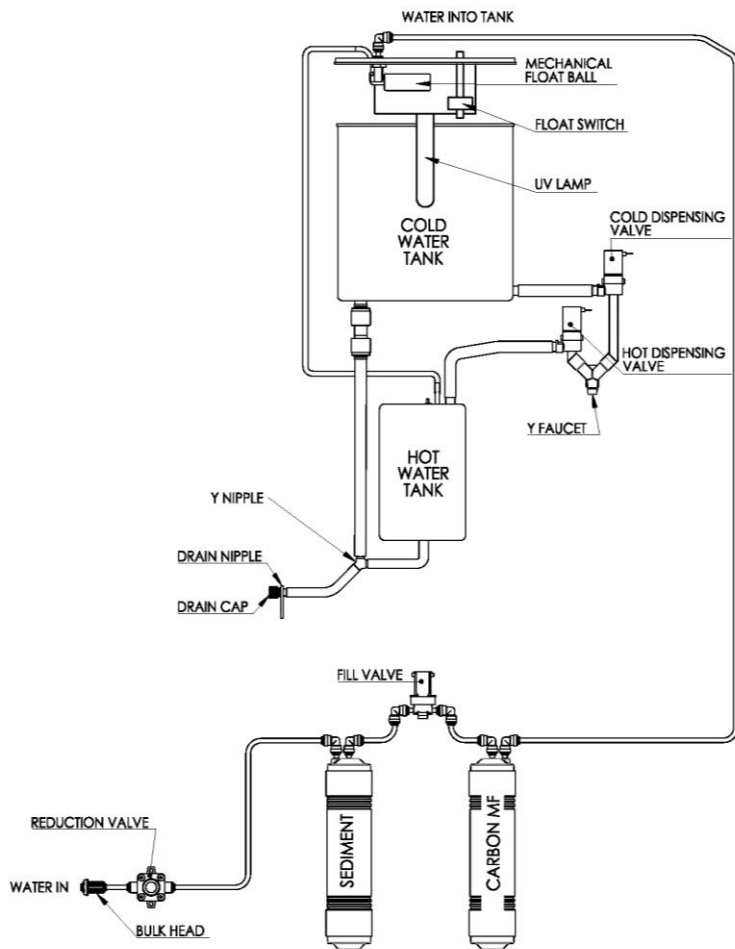
### Placement of your New Unit

- **Handle with care.**  
Fail to handle the unit with care may cause significant problems, and will void seller's warranty.
- **The Placement of the unit must be indoors.**  
Placement location should be away from direct sunlight and excessive heat, cold and moisture.
- **Avoid harmful gas or excessive heat.**  
Placement of the unit should be in an area free from gases and excessive heat sources.
- **Place unit in a clean environment.**  
Placement of the unit should be in a clean environment. Excessive dirt will increase the risk of contaminating the water and component malfunction.
- **Place unit in a well-ventilated area.**  
Please allow a minimum of 4 inches from the wall for proper function of the condenser coil located on the back of the unit.
- **Place unit on a flat and excessive heat.**  
Unbalanced placement may cause excessive noise and or shaking of the unit.

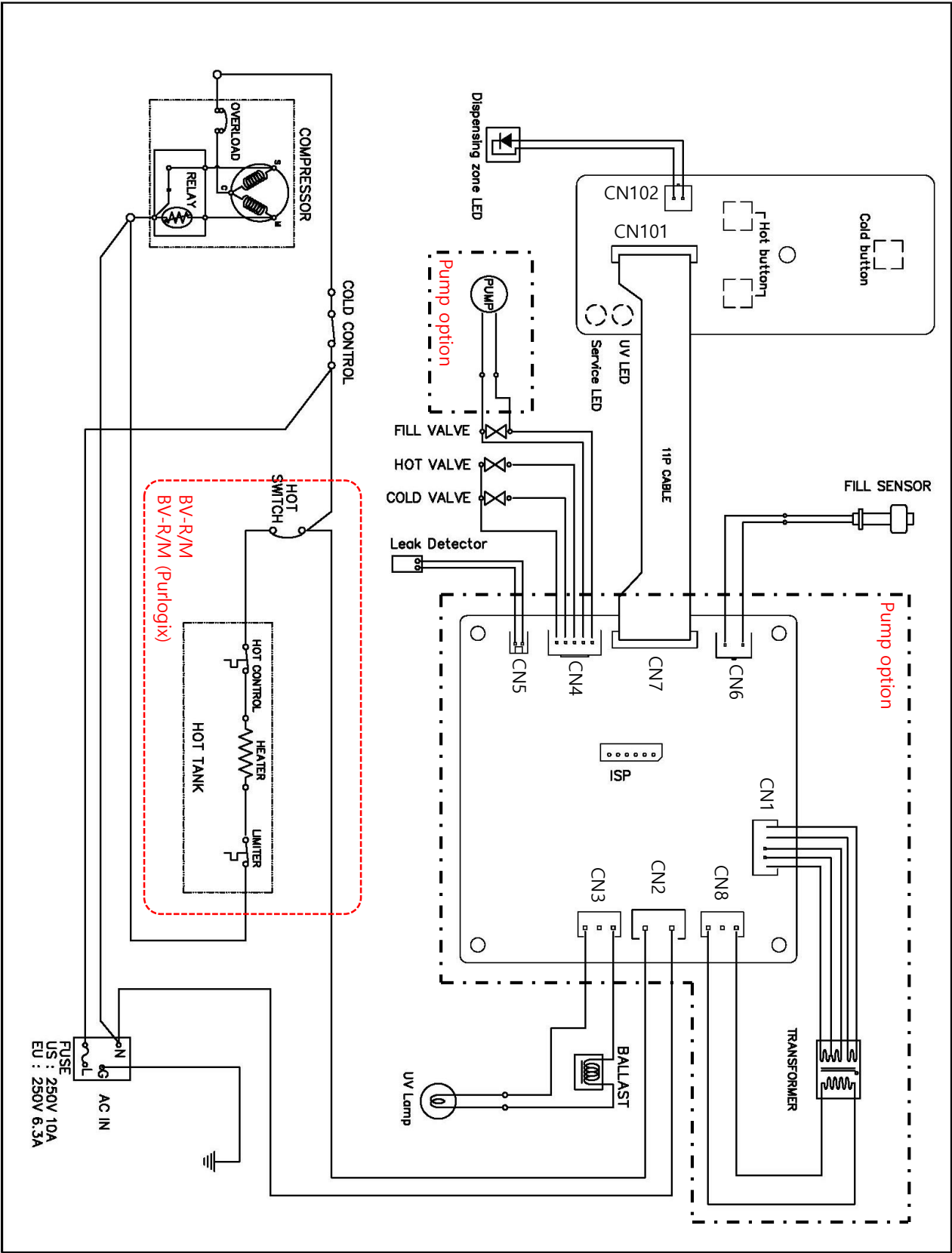




BV-M (Purlogix)

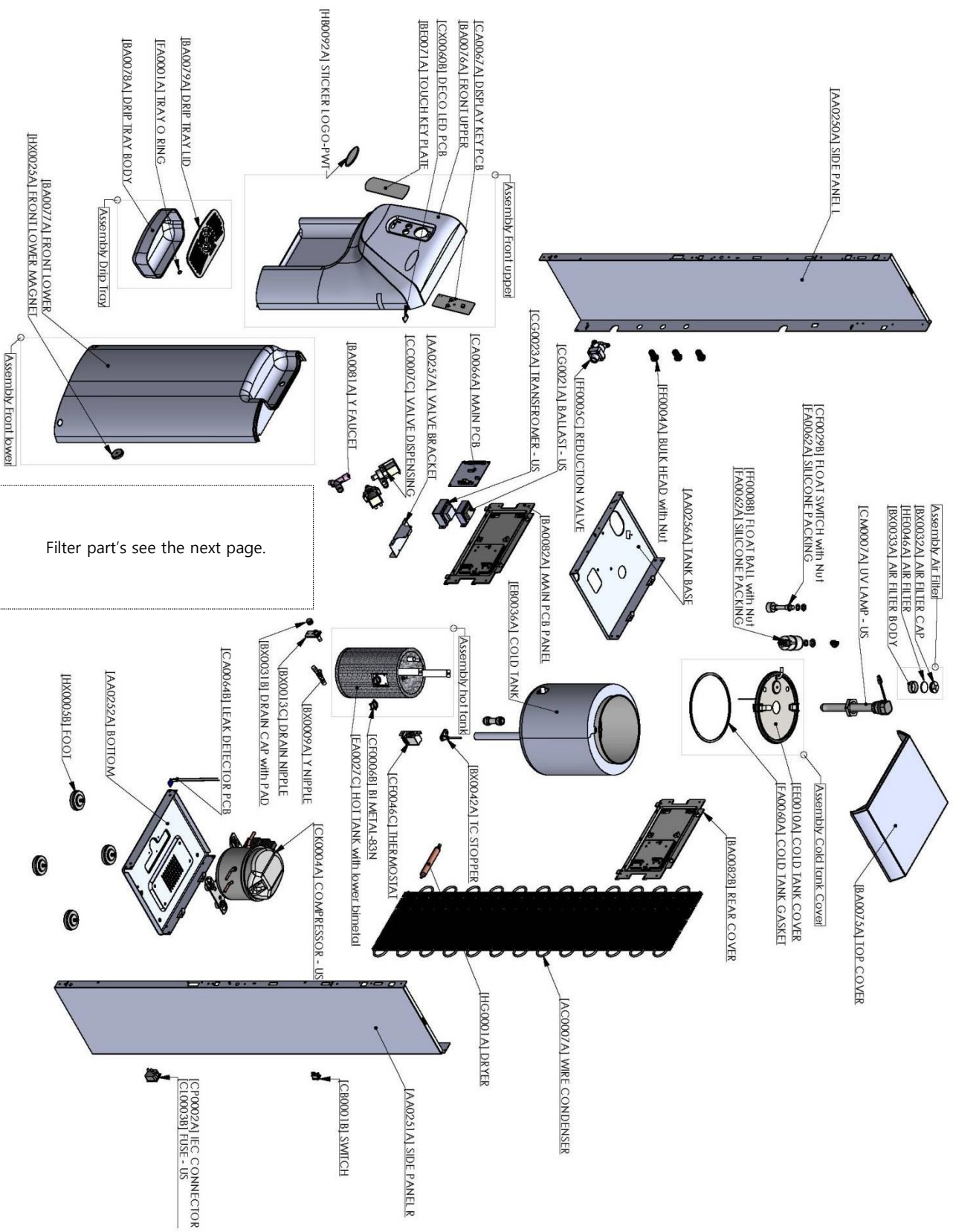


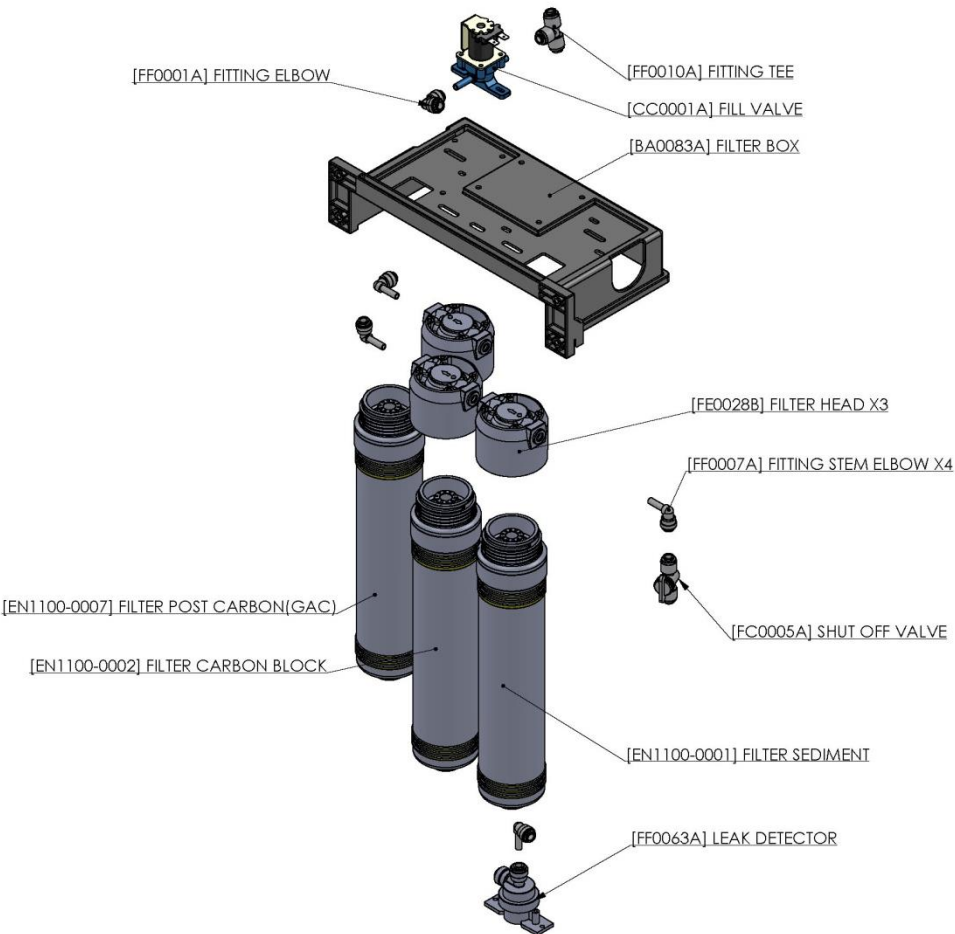
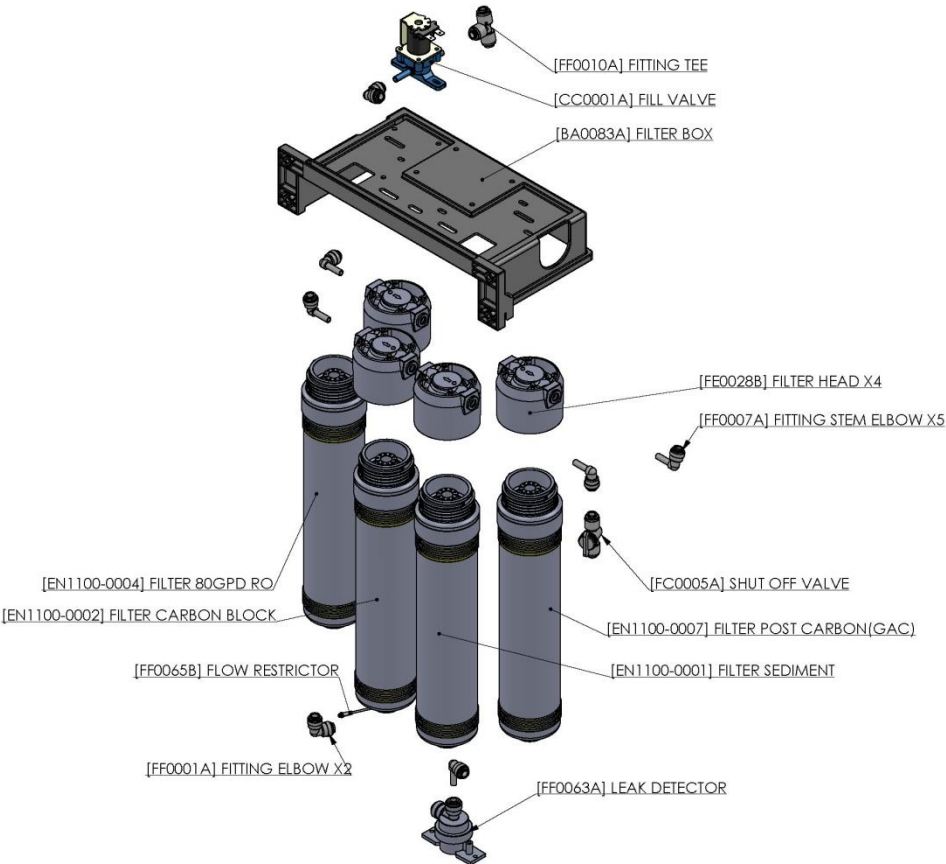
5. Electrical Diagram



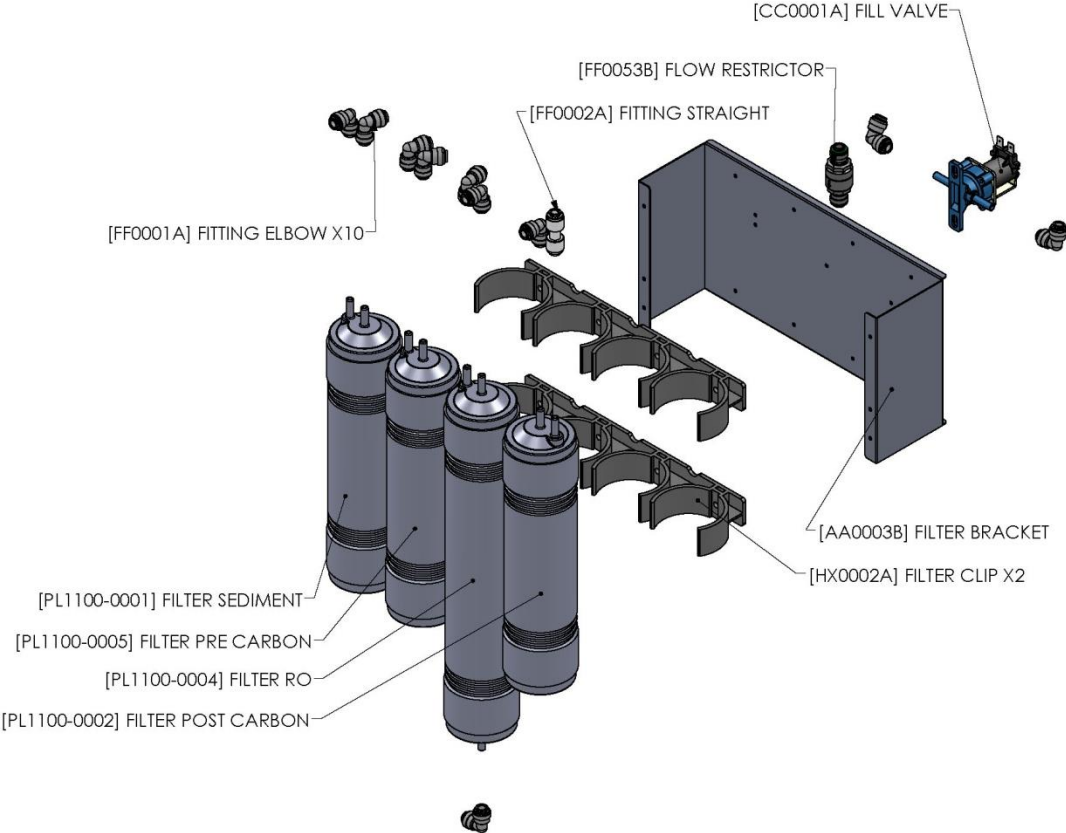


## 6. Exploded view

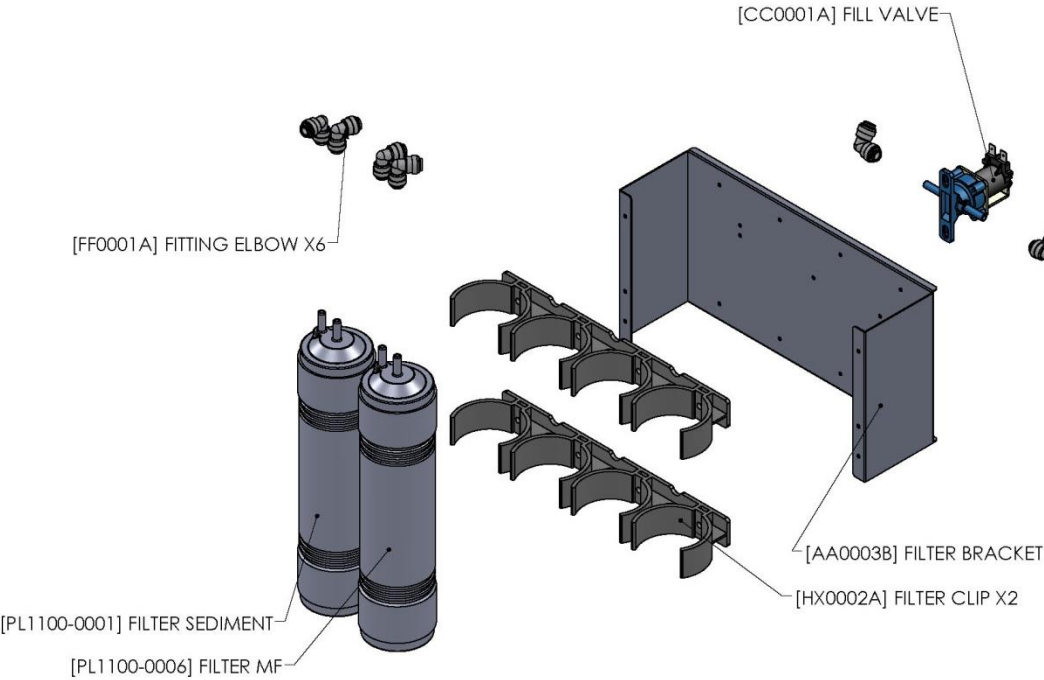




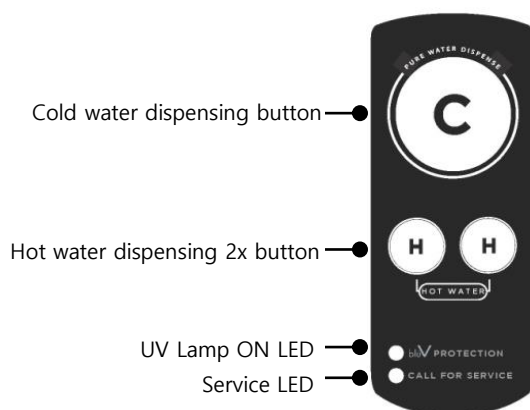
BV-R (Purlogix)



BV-M (Purlogix)



## Touch Button & indicate



### UV Lamp ON LED

- Pressing Cold Button will turn UV ON for 1 minute.
- UV Lamp is ON when LED is ON.
- Pressing Cold Button for 1 second turns UV ON.
- Once UV Lamp turns OFF, it will not come on again within 5 minutes.
- If no button input, UV Lamp will come on for 1 minute every 4 hours.

### Service LED

- If a leak is sensed, LED comes ON.
- Unit will also beep 5 times every minute.
- Float & Fill valve will become inoperable.
- Dispense system will continue to operate.
- Clear by resetting power.

### Water dispense

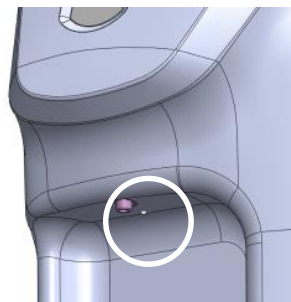
- 1) Button(s) while holding the water dispensing.
- 2) Stop automatically 30 seconds after dispensing.
- 3) The water does not come out until it is repeated several times.



Cold water dispense



Hot water dispense



### Dispensing area LED control

Two Button pressed at the same time dispensing area LED can be ON or OFF.

### How to cold water drain

(This unit does not have a cold water drain valve.)

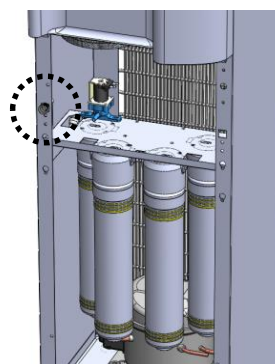
- 1) Turn off water supply.
- 2) If tank is full, reset power.
- 3) Within 2 minutes after power reset, simultaneously press 2 buttons as shown below for 5 seconds. This will open cold water dispense valve for 4 minutes.
- 4) Pressing any of the 3 buttons will stop dispense.



Press for 5 seconds.

### How to hot water drain

- 1) Turn off water supply valve.
  - 2) Remove the lower panel.
  - 3) Remove the hot water drain cap.
- Use caution because water may still be very hot.



## Ultra Violet Light

### Warning

Do not look directly at any operation Ultra Violet lamp.  
Looking directly into the lamp can cause severe eye damage.

These models are equipped with a fully automatic Ultra Violet bio film control option to protect the integrity of the filtered water before dispensing. The lamp is controlled by a microprocessor and illuminates as required to assure performance and bulb life. The bulb assembly should be replaced every 12 months assure optimum performance.

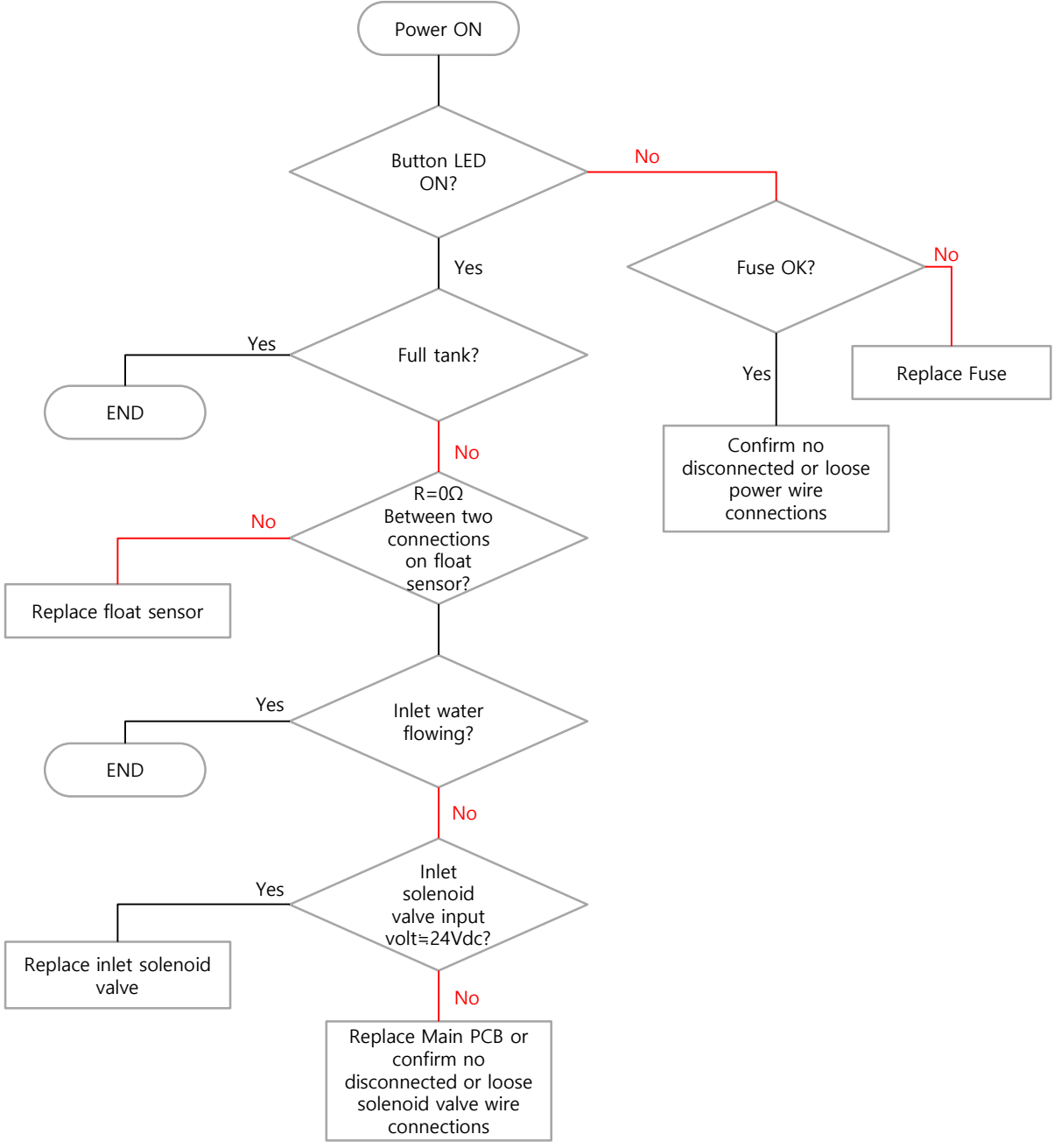
### Ultra Violet Bulb Replacement

1. Unplug unit from electrical outlet
2. Remove top of cabinet (2 Phillips screws on rear of unit)
3. locate UV lamp assembly (center of reservoir lid)
4. Disconnect the wire harness quick connect, separating the lamp assembly from the wiring harness.
5. Before removing the reservoir lid assembly sanitary gloves should be worn. Be sure to sanitize any tools or devices that will be used internally in the reservoir.
6. Remove the reservoir lid assembly by releasing the 2 lock down clamps and carefully
7. The lamp assembly is secured with a nylon nut from the bottom of the lid assembly. The nut should be easily removed by hand (if required use a large opening locking pliers device). Unscrew nut completely and remove lamp assembly.
8. Re-install new assembly being careful not to contact the quartz sleeve assembly. Tighten the retaining nut hand tight.
9. Re-assemble the reservoir lid and re-connect the wiring.
10. Plug unit into electrical outlet. The top of the lamp assembly will illuminate for 60 seconds to confirm the system is working (The illumination may not be visible in a well lit environment)
11. Replace and secure top of cabinet.

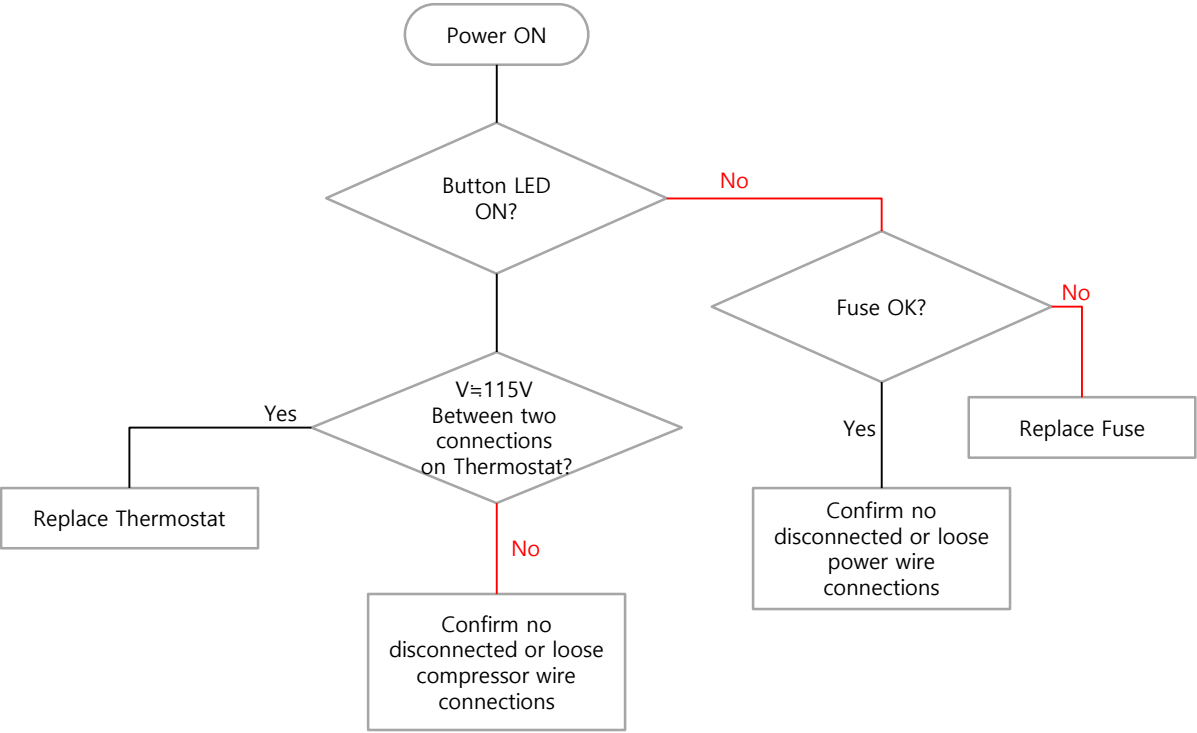
### **NOTE:**

Ultra Violet lamp assemblies contain minute traces of mercury and must be disposed of in accordance with all hazardous waste guidelines.

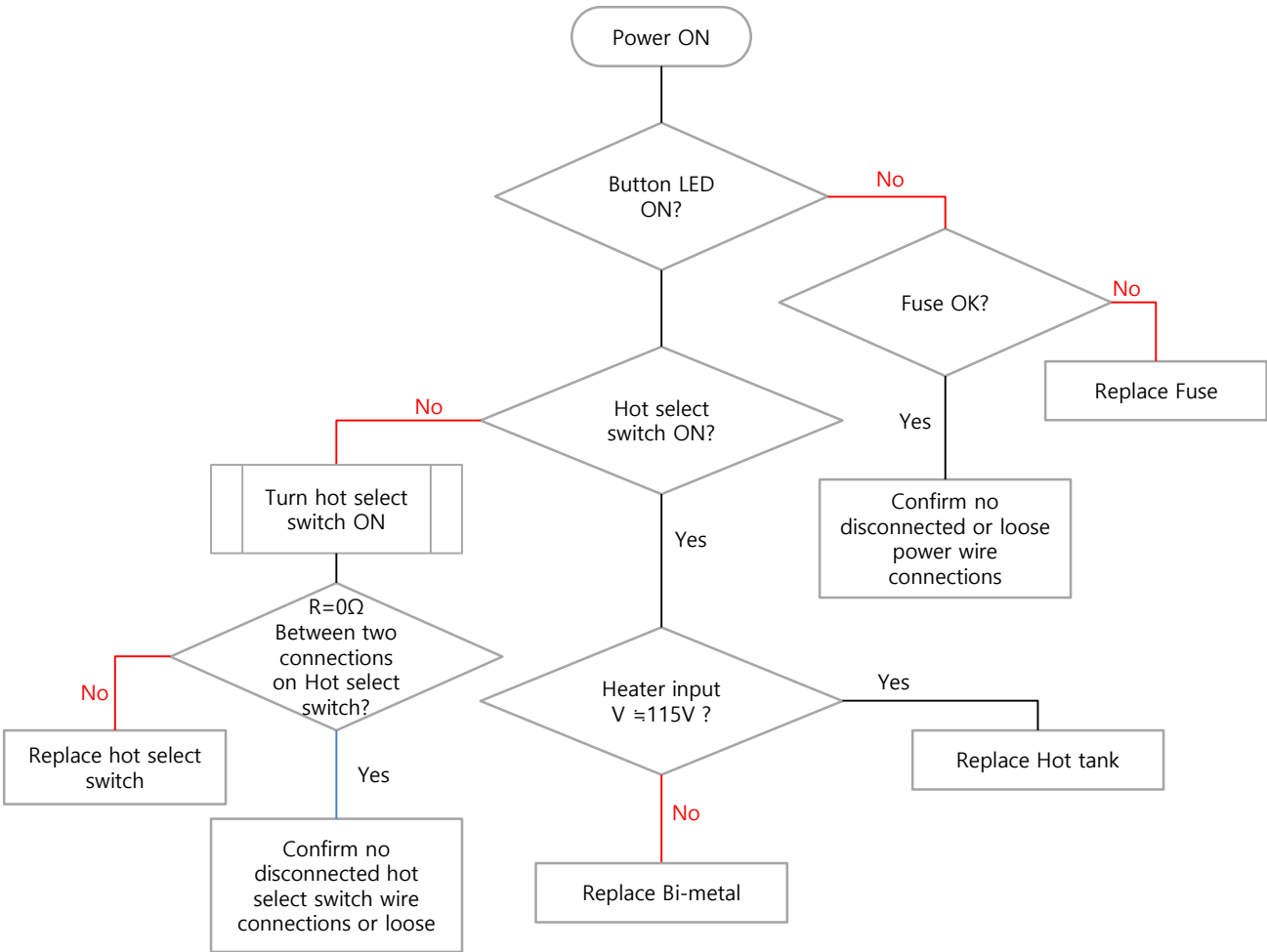
9. FILTERING SYSTEM CHECK SEQUENCE



10. COOLING SYSTEM CHECK SEQUENCE



11. HEATING SYSTEM CHECK SEQUENCE





		BV-R	BV-M	BV-RC	BV-MC
INPUT VOLTAGE		120V 60Hz / 230V 50Hz			
POWER CONSUMPTION	COOLING	1.2A / 100W [120V]			
	HEATING & COOLING	3.8A / 400W [120V]		-	
TEMP CONTROL	COLD	THERMOSTAT			
	HOT	BI METAL		-	
TANK MATERIAL	COLD	STAINLESS STEEL (STS304)			
	HOT	STAINLESS STEEL (STS304)		-	
TANK CAPACITY	COLD [Gallon]	0.79			
	HOT [Gallon]	0.5		-	
WEIGHT	Net [lb]	56.9	55.5	53.5	52.1
	GROSS [lb]	63	61.7	49.6	58.3
DIMENSION [Inch]		13[W] X 16.4 [D] X 49.7 [H]			
REFRIGERANT [Mass]		R134A [1.34oz]			